

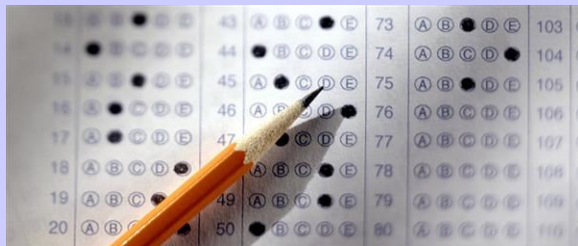


TESTING AND RESEARCH UNIT

Provides a full range of testing and assessment services for career counselors, mental health professionals, educators, students and community members.

SERVICES

- Standardized, psychological, and career testing as well as campus-wide research
- Campus center for graduate & professional school admissions testing such as TOEFL, MAT, GRE, PRAXIS, LSAT, CLEP, distance learning exams, and other assessments
- Counselor-guided personal and career interest testing
- Campus-wide research conducted on student development
- Yearly census exploring attitudes and behaviors of newly admitted undergraduate students.



LOCATION & CONTACT

Second floor, Shoemaker Building

Testing: (301)314-7688 or (301)314-0319



The Counseling Center in Shoemaker Building provides free and confidential services by professional counselors to all UM students. The Counseling Center also provides reasonable accommodations for individuals with disabilities.

Our staff of professional psychologists, counselors, learning specialists, and disability service providers are available to help you with a variety of concerns and service needs that can affect your academic and personal effectiveness.



University Counseling Center

Shoemaker Building
University of Maryland, College Park

Main Phone: (301) 314-7651

Website: www.counseling.umd.edu

Connect
with us!





COUNSELING SERVICE

Provides confidential counseling and psychotherapy for personal, emotional, and social issues as well as educational and career concerns

SERVICES

- Short-term psychological and career counseling
- Couples counseling
- Group counseling
- Consultation and outreach
- Psychological and career testing and assessment
- Parent and Faculty/Staff Warmline
- Crisis intervention
- Referral assistance



COMMON CONCERNS

- Emotional distress
- Loneliness
- Depression
- Family issues
- Social and interpersonal relationship concerns
- Stress, anxiety, and excessive worries
- Choosing a major, career, or life planning

LOCATION & CONTACT

First Floor, Shoemaker Building

(301)314-7651



LEARNING ASSISTANCE SERVICE

Helps students reach their academic goals through performance enhancement and skill development.

SERVICES

- Individual coaching, workshops, groups and one-credit courses to improve learning strategies that lead to college success
- Brain-based learning strategy workshops
- Reading, writing, math, and exam preparation
- Time management and anxiety management skills
- Peer mentoring
- Guided Study Session Program—Peer led collaborative learning groups for students in lower level larger lecture courses
- Special academic skills programs for non-traditional students, transfer students, and students on probation
- English for Speakers of Other Languages (ESOL) Conversation Program to build English conversation skills
- Computer-based programs in: reading, writing, standardized tests, ESOL, statistics, geometry, trigonometry, pre-calculus and calculus



LOCATION & CONTACT

Second Floor, Shoemaker Building

(301)314-7693



DISABILITY SUPPORT SERVICE

Coordinates services to ensure equal access for individuals with disabilities to all University programs and activities.

DSS staff establish individually tailored accommodations to specifically meet the unique requests of anyone who registers with the office.

SERVICES

- Provides reasonable accommodations, auxiliary aids, and services such as:
 - ◇ Deaf and hard of hearing services
 - ◇ Alternate format of textbooks
 - ◇ Extended time for exams
 - ◇ Note taking
 - ◇ Adaptive technology services
 - ◇ Lab/library assistance
 - ◇ Paratransit services
 - ◇ Advocacy
- Provides education, awareness and consultation for students, faculty, staff and parents



LOCATION & CONTACT

Ground Floor, Shoemaker Building
(301)314-7682 dissup@umd.edu